



2026 world abilitysport
YOUTH GAMES

Mersin, Türkiye | 15 - 22 June 2026

ENTRY INFORMATION PACK



Dear Athletes, Coaches & Officials,

It is my great pleasure to invite you to join us for the 2026 World Abilitysport Youth Games, to be held from 15–22 June 2026 in the vibrant coastal city of Mersin, Türkiye for a week of unforgettable competition.

Mersin has already proven itself to be an exceptional host for the global Para sport community following the outstanding success of the 2025 World Abilitysport Beach Games, staged on Mersin's beautiful Mediterranean shores in October last year. I am delighted for our membership and partners to be heading back to Mersin to once again experience the city's warm hospitality, passionate volunteers, and work of our dedicated Local Organisers at the National Paralympic Committee of Türkiye.

The World Abilitysport Youth Games represent far more than a competition. They are a celebration of youth, inclusion, and opportunity, where emerging athletes take milestone steps on their international journeys. The 2026 programme reflects this vision, featuring a dynamic line up of sports:

- 3x3 Wheelchair Basketball
- Adaptive Sepak Takraw
- Para Athletics - Field only
- Para Badminton
- Para Dance Sport
- Para Fencing
- Para Sailing
- Para Swimming

Together, these events will showcase athletic excellence and our collective commitment to developing the next generation of Para athletes across the world.

On behalf of World Abilitysport, I extend my sincere thanks to our hosts, the National Paralympic Committee of Türkiye for their unwavering dedication and vision. I warmly encourage all member nations, athletes, coaches, officials, and partners to be part of this memorable celebration of youth sport in 2026.

I look forward to welcoming you to Mersin for a week that will inspire, challenge, and unite us all.

With my very best regards,

Rudi Van Den Abbeele
President, World Abilitysport



Dear Athletes, Coaches, and Esteemed Members of the World Abilitysport Family,

It is my pleasure to invite you to the 2026 World Abilitysport Youth Games, hosted in the beautiful city of Mersin, Türkiye, overlooking the shores of the Mediterranean.

Mersin's golden beaches, warm hospitality, and rich cultural heritage are ready to once again welcome the international Para sport community back following an unforgettable inaugural Beach Games on its shores last year.

Our city is not only a perfect setting for world-class competition but also a place where you can experience the vibrant traditions, flavours, and beauty of Türkiye. From the moment you arrive, we are committed to ensuring that your stay is unforgettable, both in and out of competition.

The World Abilitysport Youth Games will bring together athletes, coaches, officials and supporters from all corners of the globe to compete, connect, and inspire one another in an atmosphere of friendship and mutual respect. As athletes, your determination, passion, and achievements inspire millions around the world. You remind us all that barriers can be overcome, and dreams can be achieved through hard work and perseverance. These Games will be a platform to showcase your incredible talents, foster new friendships, and create unforgettable memories that will last a lifetime.

We look forward to welcoming you to Türkiye, where you will not only compete but also become part of a global family that shares a common passion for sport and a vision for a more inclusive world.

With warm regards and best wishes for your success,

Best wishes,

Murat Aksu
President, National Paralympic Committee of Türkiye

OVERVIEW



ORGANISERS	National Paralympic Committee of Türkiye
DATES	15-22 June 2026
LOCATION	Mersin, Türkiye
SPORTS	<p>3x3 Wheelchair Basketball (IC) Adaptive Sepak Takraw Para Athletics - Field events only (NC) Para Badminton (IC) Para Dance Sport (IC) Para Fencing (IC) Para Sailing (IC) Para Swimming</p> <p>International classification is available for sports marked with a (IC). National classification will be held in sports marked with an (NC).</p>
REGISTRATION FEES	£150 per person (all team members)
INCLUSIVE DAY RATE	<p>€175 per person, per night (twin occupancy) €210pp single per night (single occupancy)</p> <p>includes all ground services - return airport transfers, full board, 4*-5* hotel accommodation & Games-time shuttle.</p>
ENTRIES OPENING	Thursday 2 nd April
ENTRIES CLOSING	Friday 8 th May
CONTACT	<p>World Abilitysport: games@worldabilitysport.org LOC: fella@tmpk.org.tr</p>

SCHEDULE & LOGSITICS

	Mon 15 June	Tues 16 June	Weds 17 June	Thurs 18 June	Fri 19 June	Sat 20 June	Sun 21 June	Mon 22 June
Arrivals	Dark Blue	Dark Blue	Grey	Grey	Grey	Grey	Grey	Grey
Team Manager's Meeting	Grey	Orange	Grey	Grey	Grey	Grey	Grey	Grey
Opening Ceremony	Grey	Grey	Orange	Grey	Grey	Grey	Grey	Grey
Sport Tech Meetings	Grey	Grey	Orange	Grey	Grey	Grey	Grey	Grey
Classification	Grey	Light Blue	Light Blue	Grey	Grey	Grey	Grey	Grey
Training	Grey	Light Blue	Light Blue	Grey	Grey	Grey	Grey	Grey
Competition	Grey	Grey	Grey	Dark Blue	Dark Blue	Dark Blue	Dark Blue	Grey
Closing Ceremony	Grey	Grey	Grey	Grey	Grey	Grey	Orange	Grey
Departures	Grey	Grey	Grey	Grey	Grey	Grey	Grey	Dark Blue

The draft Games schedule is subject to change. Sport specific schedules are available on the following sport pages.

PRE ARRIVAL

A Pre-Arrival Information Pack will be circulated to all teams ahead of their travels to the Games.

This pack will include detailed information on your passage through the airport, meal timings, transport schedules, contact information for LOC and World Abilitysport representatives as well as meeting venues and timings, ceremony information and photo/video access links.

ARRIVALS

The serviced Games airport will be Çukurova International Airport (COV) whereby the Local Organisers will arrange airport transfers for the 50km trip to Mersin. The trip takes around 45 minutes depending on traffic conditions and arrival time.

Transport based on the accessibility requirements detailed in your entries will be supplied to accommodate teams arrivals and departures.

ACCOMMODATION

All teams and officials will be accommodated in a range of 4 or 5 star hotels within a maximum 20 minute drive of the sports venues.

Full board and accommodation is included in the inclusive day rates charged at entry.

Hotels have been automatically designated for each sport to cater for accessibility and availability of rooms. The LOC may update or add to the official hotels with others of the same star rating according to need.

As always, fully wheelchair accessible rooms are limited in each hotel so accessible rooms will be allocated to teams/athletes with the most need. An accessible room will be reserved for communal use of the accessible bathroom facilities in each hotel, if required.

BN HOTEL THERMAL & WELLNESS (***)**

15 indoor pools, free waterpark access, arcade/games room, spa & fitness centre & free wifi



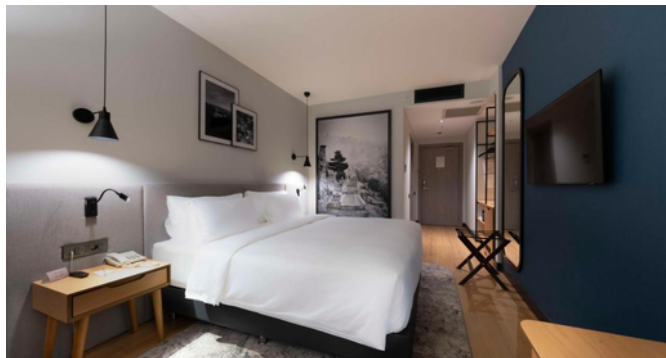
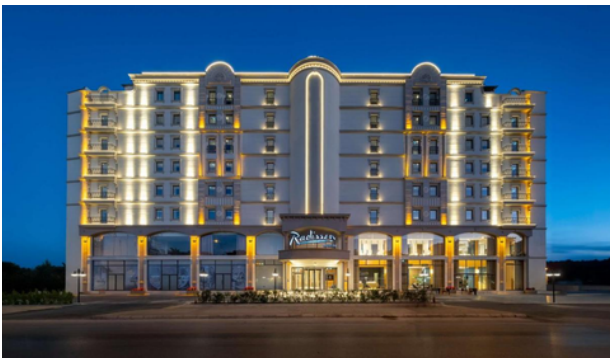
HOTEL NOAX (*****)

Outdoor pool, sauna, steam room, spa services, free hotel-wide wifi



RADISSON HOTEL MERSIN (*****)

Fitness centre, outdoor swimming pool, spa & free hotel-wide wifi



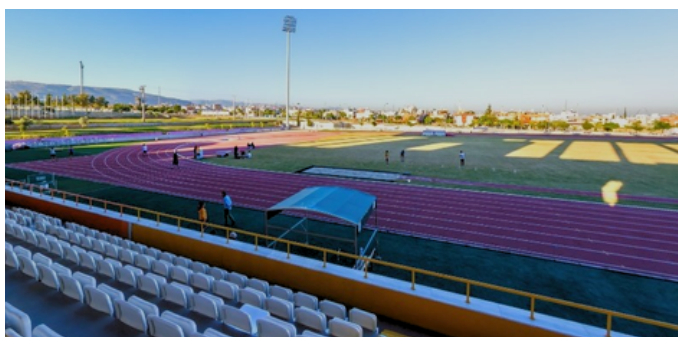
VENUES



3x3 Wheelchair Basketball
Babil Sports Centre



Adaptive Sepak Takraw
Babil Sports Centre



Para Athletics (Field)
Nevin Yanit Athletics Complex



Para Badminton
Mersin Tennis Complex- Indoor Court



Para Fencing & Para Dance Sport
BN Hotel



Para Sailing
Babil Watersports Centre



Para Swimming
Mersin Olympic Swimming Pool

3X3 WHEELCHAIR BASKETBALL (U23)



STATUS

International Wheelchair Basketball Federation (IWBF) Endorsed Competition
International classification hosted

PROVISIONAL SCHEDULE

	Mon 15 June	Tues 16 June	Weds 17 June	Thurs 18 June	Fri 19 June	Sat 20 June	Sun 21 June	Mon 22 June
Arrivals	Dark Blue	Dark Blue	Grey	Grey	Grey	Grey	Grey	Grey
Team Manager's Meeting	Grey	Orange	Grey	Grey	Grey	Grey	Grey	Grey
Opening Ceremony	Grey	Grey	Orange	Grey	Grey	Grey	Grey	Grey
Sport Tech Meetings	Grey	Grey	Orange	Grey	Grey	Grey	Grey	Grey
Classification	Grey	Grey	Light Blue	Grey	Grey	Grey	Grey	Grey
Training	Grey	Light Blue	Light Blue	Grey	Grey	Grey	Grey	Grey
Competition	Grey	Grey	Grey	Dark Blue	Dark Blue	Dark Blue	Dark Blue	Grey
Closing Ceremony	Grey	Grey	Grey	Grey	Grey	Grey	Orange	Grey
Departures	Grey	Grey	Grey	Grey	Grey	Grey	Grey	Dark Blue

VENUE

Babil Sports Centre (Ocean-front, outdoor venue)

COMPETITION RULES

IWBF 3x3 Official Wheelchair Basketball - Rules of the Game, will apply.

Teams can be mixed gender with no classification points dispensation for female players.

TEAM COMPOSITION

Each teams can consist of up to four players and two staff.

As per IWBF rules, teams can bring two more players but four players must be chosen at the Sport Technical Meeting. Following this selection, no substitutions can then be made even as a result of injury or illness.

Countries may enter up to three separate teams.

Countries must enter one qualified referee to attend with their team/s.

ELIGIBILITY

Official IWBF classification will apply. All players must have completed Stage 1 of the IWBF classification process, with eligibility confirmed prior to competition. (Stage 1 submissions must be received at least three months in advance, in line with IWBF Regulations). The final stages of classification will be conducted at the Games.

AGE GROUP

U23 - Players must be born on or after 1st January 2004 to be eligible to compete.

ADAPTIVE SEPAK TAKRAW



STATUS

International Development Competition (open age)

International Sepaktakraw Federation (ISTAF) supported

PROVISIONAL SCHEDULE

	Mon 15 June	Tues 16 June	Weds 17 June	Thurs 18 June	Fri 19 June	Sat 20 June	Sun 21 June	Mon 22 June
Arrivals	Blue	Blue	Grey	Grey	Grey	Grey	Grey	Grey
Team Manager's Meeting	Grey	Orange	Grey	Grey	Grey	Grey	Grey	Grey
Opening Ceremony	Grey	Grey	Orange	Grey	Grey	Grey	Grey	Grey
Sport Tech Meetings	Grey	Grey	Grey	Orange	Grey	Grey	Grey	Grey
Training	Grey	Blue	Blue	Blue	Grey	Grey	Grey	Grey
Competition	Grey	Grey	Grey	Grey	Dark Blue	Dark Blue	Dark Blue	Grey
Closing Ceremony	Grey	Grey	Grey	Grey	Grey	Grey	Orange	Grey
Departures	Grey	Grey	Grey	Grey	Grey	Grey	Grey	Blue

VENUE

Babil Sport Centre

COMPETITION RULES

Governed by the Law of the Game; International Sepaktakraw Federation (ISTAF)

COMPETITION FORMAT

Round-robin with finals

ELIGIBILITY

TKR1 – Lower Limb Impairment (Above Knee)
Athletes with a unilateral above-knee limb deficiency affecting the lower limb. · Includes single above-knee amputation or comparable limb deficiency. · Athletes may compete using a prosthesis or other assistive equipment to support balance and mobility.
TKR2 – Lower Limb Impairment (Below Knee)
Athletes with a unilateral below-knee limb deficiency or comparable lower-limb impairment. Eligible impairments may include: · Below-knee amputation or limb deficiency · Significant muscle weakness or muscle atrophy in one leg · Impairment resulting from polio · Leg length difference greater than 5 cm Athletes may use a prosthesis or other assistive equipment where appropriate.
TKR3 – Upper Limb Impairment
Athletes with a unilateral upper-limb deficiency or comparable impairment affecting arm function. Eligible impairments may include: · Congenital upper-limb deficiency · Unilateral below-elbow amputation · Significant joint restriction or stiffness at the wrist or arm · Muscle weakness or muscle atrophy, including impairments associated with polio

PARA ATHLETICS FIELD EVENTS ONLY



STATUS

World Para Athletics Approved - Field events only

National classification to be hosted

PROVISIONAL SCHEDULE

	Mon 15 June	Tues 16 June	Weds 17 June	Thurs 18 June	Fri 19 June	Sat 20 June	Sun 21 June	Mon 22 June
Arrivals								
Team Manager's Meeting								
Opening Ceremony								
Sport Tech Meetings								
Training								
Competition								
Closing Ceremony								
Departures								

VENUE

Nevin Yanit Athletics Complex

COMPETITION DISCIPLINES

Field events only - shotput, discus, javelin, club throw, long jump & high jump

ELIGIBILITY

All WPA physical impairment classes will be on offer for all field events during entries.

The final programme will be determined by entries received.

Classes: 30's, 40's, 50's, 60's

COMPETITION RULES

World Para Athletics Rules & Regulations will apply.

World Para Athletics Point Score System will be in use for combined events.

AGE GROUPS

Under-17 (U17) and Under-20 (U20), based on age on 31 December in the year of competition.

Category	Gender	Min Age	Max Age	Min DOB	Max DOB
Under-17 (U17)	Male/Female	14	16	Jan 1, 2010	Dec 31, 2012
Under-20 (U20)	Male/Female	17	19	Jan 1, 2007	Dec 31, 2009

PARA BADMINTON (U21)



STATUS

Badminton World Federation approved
International classification to be hosted

PROVISIONAL SCHEDULE

	Mon 15 June	Tues 16 June	Weds 17 June	Thurs 18 June	Fri 19 June	Sat 20 June	Sun 21 June	Mon 22 June
Arrivals	Dark Blue	Dark Blue	Grey	Grey	Grey	Grey	Grey	Grey
Team Manager's Meeting	Grey	Orange	Grey	Grey	Grey	Grey	Grey	Grey
Opening Ceremony	Grey	Grey	Orange	Grey	Grey	Grey	Grey	Grey
Sport Tech Meetings	Grey	Grey	Orange	Grey	Grey	Grey	Grey	Grey
Training	Grey	Blue	Blue	Grey	Grey	Grey	Grey	Grey
Classification	Grey	Blue	Blue	Grey	Grey	Grey	Grey	Grey
Competition	Grey	Grey	Grey	Dark Blue	Dark Blue	Dark Blue	Dark Blue	Grey
Closing Ceremony	Grey	Grey	Grey	Grey	Grey	Grey	Orange	Grey
Departures	Grey	Grey	Grey	Grey	Grey	Grey	Grey	Dark Blue

VENUE

Mersin Tennis Complex- Indoor Court

COMPETITION DISCIPLINES

Men's & Women's singles
Men's & Women's doubles
Mixed doubles

ELIGIBILITY

All BWF P.I. classes will be on offer on the sports programme. The schedule will be finalised following close of entries.

COMPETITION RULES

Badminton World Federation General Competition Regulations will apply.

AGE GROUPS

As per BWF rules, the minimum age eligible to compete is 13 years old and maximum age is 21 years old as of 31 December 2026.

PARA DANCE SPORT YOUTH WORLD CUP (U21)



STATUS

World Para Dance Sport Youth World Cup (U21)
International classification to be hosted

PROVISIONAL SCHEDULE

	Mon 15 June	Tues 16 June	Weds 17 June	Thurs 18 June	Fri 19 June	Sat 20 June	Sun 21 June	Mon 22 June
Arrivals								
Team Manager's Meeting								
Opening Ceremony								
Sport Tech Meetings								
Training								
Classification								
WPDS Youth World Cup								
WPDS International								
Closing Ceremony								
Departures								

VENUE

BN Hotel Thermal & Wellness

COMPETITION DISCIPLINES

Singles Standard & Singles Freestyle

ELIGIBILITY

Powerchair (class 1)

Class 1 & Class 2 (combined)

The minimum age eligible to compete is 13 years old and maximum age is 21 years old as of 31 December 2026.

COMPETITION FORMAT

Standard - Heats & Finals

Freestyle - Absolute points score

COMPETITION RULES

[2026 World Para Dance Sport Rules](#)

ADDITIONAL DEVELOPMENT EVENT

- Eligibility: Standing/ambulant dancers with physical impairments who have submitted medical documentation
- Competition Discipline: Freestyle competition (absolute score points)
- Age Group: Open

PARA DANCE SPORT INTERNATIONAL



STATUS

World Para Dance Sport International (open age)
International classification to be hosted

PROVISIONAL SCHEDULE

	Mon 15 June	Tues 16 June	Weds 17 June	Thurs 18 June	Fri 19 June	Sat 20 June	Sun 21 June	Mon 22 June
Arrivals								
Team Manager's Meeting								
Opening Ceremony								
Sport Tech Meetings								
Training								
Classification								
WPDS Youth World Cup								
WPDS International								
Closing Ceremony								
Departures								

VENUE

BN Hotel Thermal & Wellness

COMPETITION DISCIPLINES

Singles, Duo, Combi, Freestyle, Latin & Standard

ELIGIBILITY

Powerchair (Class 1)

Class 1

Class 2

COMPETITION FORMAT

Standard, Duo, Combi, Latin & Standard - Heats & Finals

Freestyle - Absolute points score

COMPETITION RULES

[2026 World Para Dance Sport Rules](#)

PARA FENCING

U23 WORLD CHAMPIONSHIPS



STATUS

World Para Fencing U23 World Championships
International classification to be hosted

PROVISIONAL SCHEDULE

	Mon 15 June	Tues 16 June	Weds 17 June	Thurs 18 June	Fri 19 June	Sat 20 June	Sun 21 June	Mon 22 June
Arrivals	Dark Blue	Dark Blue	Grey	Grey	Grey	Grey	Grey	Grey
Team Manager's Meeting	Grey	Orange	Grey	Grey	Grey	Grey	Grey	Grey
Opening Ceremony	Grey	Grey	Orange	Grey	Grey	Grey	Grey	Grey
Sport Tech Meetings	Grey	Orange	Grey	Grey	Grey	Grey	Grey	Grey
Training	Grey	Blue	Grey	Grey	Grey	Grey	Grey	Grey
Classification	Grey	Blue	Grey	Grey	Grey	Grey	Grey	Grey
U17 & U23 World Champs	Grey	Grey	Dark Blue	Dark Blue	Dark Blue	Grey	Grey	Grey
Satellite Tournament (Open)	Grey	Grey	Grey	Grey	Grey	Grey	Grey	Grey
Closing Ceremony	Grey	Grey	Grey	Grey	Grey	Grey	Orange	Grey
Departures	Grey	Grey	Grey	Grey	Grey	Blue	Blue	Blue

VENUE

BN Thermal & Wellness Hotel

COMPETITION RULES

World Para Fencing Competition Rules & Regulations apply

EVENTS

U23 Individual Men Foil | Epee | Sabre

U23 Individual Women Foil | Epee | Sabre

U17 Individual Men Foil | Epee | Sabre (dependent on entries)

U17 Individual Women Foil | Epee | Sabre (dependent on entries)

AGE GROUPS

Fencers can take part in all the official WPF U23 competitions until the 31st December of the year in which they turn 23 years old.

In the event there are a viable number of fencers to create an U17 World Championships, this will be communicated to teams at the earliest opportunity.

ENTRY LINK

[Ophardt entry system](#)

PARA FENCING SATELLITE TOURNAMENT



STATUS

World Para Fencing Satellite Tournament
International classification to be hosted

PROVISIONAL SCHEDULE

	Mon 15 June	Tues 16 June	Weds 17 June	Thurs 18 June	Fri 19 June	Sat 20 June	Sun 21 June	Mon 22 June
Arrivals	Dark Blue	Dark Blue	Dark Blue	Dark Blue	Dark Blue	Grey	Grey	Grey
Team Manager's Meeting	Grey	Orange	Grey	Grey	Grey	Grey	Grey	Grey
Opening Ceremony	Grey	Grey	Orange	Grey	Grey	Grey	Grey	Grey
Sport Tech Meetings	Grey	Grey	Grey	Grey	Orange	Grey	Grey	Grey
Training	Grey	Grey	Grey	Grey	Blue	Grey	Grey	Grey
Classification	Grey	Grey	Grey	Grey	Blue	Grey	Grey	Grey
U23 World Champs	Grey	Grey	Grey	Grey	Grey	Grey	Grey	Grey
Satellite Tournament (Open)	Grey	Grey	Grey	Grey	Grey	Dark Blue	Dark Blue	Grey
Closing Ceremony	Grey	Grey	Grey	Grey	Grey	Grey	Orange	Grey
Departures	Grey	Grey	Grey	Grey	Grey	Grey	Grey	Blue

VENUE

BN Thermal & Wellness Hotel

COMPETITION RULES

World Para Fencing Competition Rules & Regulations apply

EVENTS

Individual Men Foil A & B
Individual Men Epee A & B
Individual Men Sabre A & B
Individual Women Foil A & B
Individual Women Epee A & B
Individual Women Sabre A & B

AGE GROUPS

Open

ENTRY LINK

[Ophardt entry system](#)

PARA SAILING (U25)



STATUS

World Sailing approved (U25)

Hansa 303 Class

International classification hosted

	Mon 15 June	Tues 16 June	Weds 17 June	Thurs 18 June	Fri 19 June	Sat 20 June	Sun 21 June	Mon 22 June
Arrivals	Dark Blue	Dark Blue	Grey	Grey	Grey	Grey	Grey	Grey
Team Manager's Meeting	Grey	Orange	Grey	Grey	Grey	Grey	Grey	Grey
Opening Ceremony	Grey	Grey	Orange	Grey	Grey	Grey	Grey	Grey
Sport Tech Meetings	Grey	Grey	Orange	Grey	Grey	Grey	Grey	Grey
Training	Grey	Blue	Blue	Grey	Grey	Grey	Grey	Grey
Competition	Grey	Grey	Grey	Dark Blue	Dark Blue	Dark Blue	Dark Blue	Grey
Closing Ceremony	Grey	Grey	Grey	Grey	Grey	Grey	Orange	Grey
Departures	Grey	Grey	Grey	Grey	Grey	Grey	Grey	Blue

VENUE

Babil Watersports Centre

COMPETITION RULES

World Sailing Racing Rules of Sailing, Race Management Manual, Para classification rules for sailing, equipment and support person regulations apply.

ELIGIBILITY

Under 25 years old at the start of competition.

Countries must be members in good standing with World Sailing.

Entries are capped at 20 Male and 20 Female competitors, with 1 entry per country for each event.

Entries in excess of 1 entry per event will then be waitlisted.

MD/ MIC classification (P.I. only)

COMPETITION FORMAT

Hansa 303 Class One-Person Round robin racing in flights.

Competitors will be seeded by World Rankings for initial flight allocation, then re-seeded daily based on results.

Finals may also be held.

PARA SWIMMING



STATUS

World Para Swimming approved
No international classification hosted

PROVISIONAL SCHEDULE

	Mon 15 June	Tues 16 June	Weds 17 June	Thurs 18 June	Fri 19 June	Sat 20 June	Sun 21 June
Arrivals							
Team Manager's Meeting							
Opening Ceremony							
Sport Tech Meetings							
Training							
Competition							
Closing Ceremony							
Departures							

VENUE

Mersin Olympic Swimming Pool - 50m long course

COMPETITION RULES

World Para Swimming Rules & Regulations (February 2026) will apply.

ELIGIBILITY

All events for athletes in WPS physical impairment classes on offer (S1-S10)

Athletes must 12 years of age or older (subject to the table below outlining the age categories for youth Para swimming Competitions) by 31 December in the year of the Competition; and not exceed the maximum age by 31 December in the year of the Competition, in accordance with the following table:

Age Categories (on 31/12/26)	Gender	Min. Age	Max. Age
Youth Men 12-16	Male	12	16
Junior Men 17-18	Male	17	18
Youth Women 12-15	Female	12	15
Junior Women 16-18	Female	16	18

ADDITIONAL INFORMATION



TRANSPORT

Transfers to and from Çukurova International Airport will be provided on the arrival and departure days detailed in the schedule. Smaller teams will be transported together with others arriving at similar times, therefore you may be required to wait prior to departure to the hotels.

Airport transfers will be arranged based solely on the information provided. It is the responsibility of the teams to ensure the arrival and departure information given is correct.

Shuttle transport will be provided daily for teams to travel between the hotels and sport venue. Both shuttle and airport transport is included in the inclusive day rate.

CATERING

Breakfast, lunch and dinner is included in the Inclusive Day Rates charged at entry. Lunch may be a packed lunch or served at the hotel depending on your sport's training and competition schedule. This information will be shared in your Pre-Arrival Information Pack.

The first meal included in the package is dinner on your arrival day and the last meal included is breakfast on departure day.

VISAS

Please check with your local Embassy or High Commission to see what the visa requirements are for entering Türkiye. Please [click here](#) for information on e-visas and the countries for which this is an option.

It is the responsibility of the teams to manage their own visa requirements.

Requests for visa invitation letters should be sent to the Local Organising Committee on fella@tmpk.org.tr and must include all passport information and a copy of the photo page of each passport.

Visa invitation letters will not be issued until Registration Fees are received in full.

INSURANCE

Teams must provide insurance for their own accident and liability. World Abilitysport accepts no liability and assumes no responsibility for loss or theft of materials or personal belongings during the Games.

All participants have the duty to observe safety regulations and other rules of the facilities provided. All teams are required to sign and return the waiver provided prior to the start of the Games.



ACCREDITATIONS

A recent passport sized photo, with a clear, light coloured background must be sent in a zip file along with your entry form for every member of the delegation. Accreditations will be available upon arrival to the Games.

MEDICAL PROVISION

Mersin Medical Park is a public and private hospital situated a maximum of 4km/10 minute drive from all sports venues and hotels. Medical provision will be based at all sports venues to provide first aid and emergency care as needed.

CLASSIFICATION

World Abilitysport understands the importance of classification opportunities for our Members and we are pleased to confirm international classification opportunities will be hosted in 3x3 wheelchair basketball, Para badminton, Para dance, Para fencing, Para sailing & Para swimming. National classification will be hosted in Para athletics.

Classification assessments must be requested and scheduled directly with the International Federation, following their application procedures, as normal.

Classification slots are determined by the IF. World Abilitysport and the LOC have no control over athletes selected for classification or the appointment slot provided. World Abilitysport will share the classification schedules immediately upon receipt.

Athletes with classification booked must arrive at least the day before their scheduled slot.

ANTI DOPING

The World Abilitysport Anti-Doping Code, in compliance with the World Anti-Doping Agency (WADA) Code, will apply to all sports. Athletes can be tested at any time, during or out of competition.

For more information on the Anti-Doping Code, please visit the World Abilitysport website.

ATHLETE REPLACEMENT

Nations can replace/substitute athletes of the same gender, class and event for those that have had to withdraw for any reason up to two weeks (1/6/2026) before the start of the Games.

World Abilitysport and/or the Technical Delegates reserve the right to refuse any substitution or replacement after this time.

ADDITIONAL INFORMATION



SAFEGUARDING

Safeguarding is a priority for World AbilitySport at our Games and events. As such two World AbilitySport Safe Sport Managers, Craig Carscadden (M) and Elin Luce (F) will be present, in person, at the Games.

The contact information for both Safe Sport Managers will be available in your Pre-Arrival Packs and at the Games information desks at each of the hotels.

For more information on our Safeguarding Policy and reporting an incident, please visit the World AbilitySport website [here](#).

MEDIA

Photos and videos taken at the Games will be available to view, download and share, rights free, from a Google Drive link that will be shared with athletes, staff and officials ahead of the Games.

The hashtags #Mersin2026 and #WhereAbilityWins will be used on all shared content and we invite participants to also use them in their posts. Feel free to tag or collaborate with World AbilitySport (@WorldAbilitySport) and the Local Organising Committee (@TurkParalimpik) on your posts so we can share your moments too!

If any members of a team do not wish to be included in any photos or video content, please make them known in the 'additional comments' section of the athlete/staff entry or email games@worldabilitysport.org so they can be identified to our media team ahead of arrival.

GAMES INFORMATION DESKS

LOC representatives will be present at Games Information Desks in the foyer of all team and officials hotels (specific timings to be shared in your Pre-Arrival Packs).

Your accreditations and team welcome packs will be available for collection upon arrival at these desks. World AbilitySport pin badges will also be available at these desks to begin your athlete's collection of pins!

At the desks you will find information such as sport schedules, transport timetables, meeting times & locations, Ceremony details and departure collections etc. Representatives at these desks will be able to support in any issues you may have or escalate matters to a member of the Local Organising Committee or World AbilitySport, as appropriate.

ENTRY PROCESS



Organisations in membership with the International Federations of sports on the Games programme are permitted to enter with the authorisation of the World Abilitysport Member in the country. If there is no World Abilitysport Member in the entering country then access will be granted to the organisation following verification of membership with the International Federation.

TEAM REGISTRATION & LOGISTICS

All teams must register on the World Abilitysport's entry platform, [Eventscape](#), to submit their accommodation, travel, accreditation and other logistical information. Access to the platform will be shared with the notification of entries opening.

SPORT ENTRIES

To allow organisations to use the sport entry platforms they are familiar with, sport entries will be managed on the following platforms.

Sport	Entry Platform
Para Athletics (Field) Para Dance Sport Para Swimming	WA-SMS (SDMS)
Para Fencing	Ophardt
Para Badminton	BWF Entry Platform
Adaptive Sepak Takraw 3x3 Wheelchair Basketball Para Sailing	Eventscape (sport event/classes can be submitted alongside team registration)

Please adhere to the following deadline dates to ensure a smooth entry process for all;

ENTRIES OPENING Thursday 2nd April

ENTRIES CLOSING Friday 8th May

TRAVEL CONFIRMATION Monday 18th May

Arrival & departure information must be finalised.

The LOC may be unable to arrange flight transfers for teams that do not adhere to this deadline.

World Abilitysport and the LOC reserves the right to make changes to the above dates. Changes will be communicated to Members at the earliest opportunity.



REGISTRATION FEE £150 per person (all team members)

INCLUSIVE DAY RATE €175 per person, per night (twin occupancy)
€210pp single per night (single occupancy)
Includes full board accommodation, airport transfers, Games-time shuttle, classification (if applicable) and all ceremonies & sports costs.

PAYMENT DEADLINE Monday 18th May
No accommodation will be booked for teams until fees are received in full.
If payments are not received by 18th May, team entries will be cancelled.

LATE ENTRIES Late entries received in between 8th and 18th May will incur an additional £50 per person in late registration fees.

No entries will be accepted after the 18th May under any circumstance.

CONDITIONS OF PAYMENT

Invoices for registration fees and inclusive day rates will be issued upon receipt of your team's entry. Invoices will be sent directly to the email address provided in your entry form.

Please note registration fees due to World Abilitysport must be paid in GBP (£) and inclusive day rates due the LOC must be paid in Euros (€). Bank details for transfer will be provided on your invoices.

All fees incurred on the bank transfer, including fees in domestic and foreign intermediary banks, must be covered by the payer.

The following payment reference must be used for all bank transfers: 2026YOUTH*COUNTRY*. Please retain proof of payments as this may be requested prior or on arrival.

All cancellations will be subject to the following refund policy; 100% refund for cancellations between 2nd April - 8th May and 50% refund for cancellations between 8th May - 18th May. No refunds will be arranged after 18th May unless medical certification confirming injury or illness is received.

World Abilitysport will be unable to accept cash currency at the Games. All monies owed must be paid by bank transfer in adherence to the deadline dates communicated. For countries with restricted banking, by prior arrangement, teams will be able to make electronic payments at the Games.

Please note, World Abilitysport will be unable to issue visa invitation letters until registration fees have been received in full. In addition, no accommodation will be booked for teams until the inclusive day rate invoice is paid in full.



2026 world abilitysport
YOUTH GAMES



World Abilitysport
games@worldabilitysport.org



Local Organising Committee
fella@tmpk.org.tr