



29er Lipno
Europeans

1st-8th Aug 2026
Czech Republic

29er **European Championships**

Lake Lipno, Czech Republic

1st to 8th August 2026

**The Organising Authority is Jachetní klub Černá v Pošumaví in
conjunction with the International 29er Class Association**

NOTICE OF RACE

[NP] denotes a rule that shall not be grounds for protests by a boat. This changes RRS 60.1.

[DP] denotes a rule for which the penalty is at the discretion of the International Jury.

[SP] denotes a rule for which a standard penalty may be applied by the race committee without a hearing or a discretionary penalty applied by the International Jury with a hearing. This changes RRS A5.1

1. RULES

1.1 The regatta will be governed by the rules as defined in *The Racing Rules of Sailing*.

1.2 Penalties: In RRS 44.1 "Two-Turns Penalty" is changed to "One-Turn Penalty"

1.3 Appendix P, Special Procedures for Rule 42, applies with RRS P2.1 to P2.3 deleted and replaced by:

P2.1 First and Second Penalty

When a boat is penalized under rule P1.2 for the first or second time during the event, her penalty shall be a One-Turn Penalty under rule 44.2. If she fails to take the penalty she shall be disqualified without a hearing.

P2.2 Third and Subsequent Penalties

When a boat is penalized a third or subsequent time during the event, she shall promptly retire. If she fails to do so she shall be disqualified without a hearing and her score shall not be excluded.

1.4 The Class Rules will apply except for any that are altered by this Notice of Race. The Class Race Management Guidelines will also apply, but a failure to follow these Guidelines is not on its own grounds for redress. This changes RRS 61.4(b).

<https://29er.org/assets/29erMedia/29er%20RACE%20MANAGEMENT%20GUIDELINES%202024-2.pdf>

1.5 RRS Appendix T, Arbitration applies.

2. SAILING INSTRUCTIONS

The Sailing Instructions will be available online at www.29ereuropeans.org at the latest five days before the event. No paper copies will be handed out.



3. COMMUNICATIONS

- 3.1 The official notice board is located online at www.29ereuropeans.org
- 3.2 [DP] Except in emergency a boat shall neither make nor receive radio transmissions, text messages or cellular phone calls while racing.

4. ELIGIBILITY AND ENTRY

- 4.1 All competitors shall be fully paid-up members of the International 29er Class Association.
- 4.2 Eligible boats shall enter through the event website www.29ereuropeans.org via OurClubAdmin.
- 4.3 Competitors shall be aged 13 years or older before 31st December 2026. Entries from sailors under this age will NOT be accepted by the Organising Authority.
- 4.4 Russian and Belarusian nationals are not permitted to enter the Championship.
- 4.5 **Parent/Guardian Declarations:** All helms and crews under 18 years of age during the event shall complete a Parent/Guardian declaration as part of the entry form which will be emailed to each competitor for their records when entry for the event is complete for the team. During registration competitors may disclose any medical data they feel is relevant to the organisers. This information will be held confidentially and destroyed after the event unless there is a legal reason for its retention.

5. FEES

- 5.1 Entry fees; Standard Entry Fee Euro 490 (until 14th June 2026), Late Entry Euro 590 (until 19th July 2026)
- 5.2 Entries after 19th July 2026 will only be accepted at the discretion of the Class Executive with the payment of the Late Entry Fee.
- 5.3 Coach Event Registration Fee: Euro 100 per person. All registered coaches will have the same rights and access as the participants (including meals and event facilities).
Coaches sharing a coach boat: Euro 70 per person
- 5.4 Refund of Entry Fees: If a boat withdraws from the European Championships, the entry fee will be refunded as follows;
 - Up to 19th July 2026: 50% of the entry fee will be refunded.
 - After 19th July 2026: Refunds shall **not** be granted.
- 5.5 Cancellation; if the European Championship is cancelled each competitor or coach shall receive a refund of 75% of the entry fee paid.

6. [NP][DP] ADVERTISING

Boats may be required to display event advertising chosen and supplied by the Organising Authority and the International 29er Class Association. Boats shall not display advertising from previous events. The Organising Authority may supply bibs that competitors are required to wear.

7. FORMAT OF RACING

The regatta will consist of a Qualifying series and a Final series.

8. SCHEDULE

- 8.1 The Championship schedule will be as follows:

Saturday 1st August	Race Office open	0900
	Registration and Inspection	0900 - 1800



Sunday 2nd August	Registration and Inspection	0900 - 1800
	Competitors briefing	1800
	Opening Ceremony	1830
Monday 3rd August	Qualifying series races	1100
Tuesday 4th August	Qualifying series races	1100
Wednesday 5th August	Qualifying series races	1100
	Regatta Dinner	1800
Thursday 6th August	Final series races	1100
Friday 7th August	Final series races	1100
Saturday 8th August	Final series races	1000
	Prize Giving & Closing Ceremony	TBC

- 8.2 The championship will comprise up to 18 races. Up to 4 races for each fleet may be sailed on any day without a change to the Sailing Instructions.
- 8.3 On Saturday 8th August there will be no warning signal after 1600.
- 8.4 On each day of racing, a Coach briefing will be held 90 minutes before the scheduled time of the first warning signal for that day.

9. [DP] MEASUREMENT

- 9.1 Measurement - all competitors shall be required to complete an equipment registration form prior to racing.
- 9.2 A boat's equipment shall pass the "Inspection" prior to the first day of racing, according to the schedule (see NOR 8.1). The timetable for inspections will be published by Monday 28th July.
- 9.3 Only one set of sails, and one forestay, shall be used throughout the regatta.
- 9.4 Equipment shall only be replaced with the permission of the Technical Committee.
- 9.5 Boats may be inspected at any time.
- 9.6 Neither boats nor support persons shall have non-Class-legal equipment on the venue from the first day of Inspection.

10. VENUE

- 10.1 The 2026 29er European Championships will be held at the Černá v Pošumaví 183,382 23, Czech Republic
For mailing contact: [europeans@sailing.cz](mailto: europeans@sailing.cz)
- 10.2 Attachment A shows the approximate location of the racing areas.

11. COURSES

Courses will be windward-leeward with a gate at the leeward end of the course. The race target time will be 30 minutes.

12. SCORING

- 12.1 The Low Points Scoring System of RRS Appendix A will apply.
- 12.2 THREE Qualifying races are required to be completed by all fleets to constitute a regatta.
- 12.3 FIVE Qualifying races are required to be completed by each fleet to constitute a Qualifying Series. If five races have not been completed as scheduled, the Qualifying Series will continue until the end of the racing day in which a fifth qualifying race is completed for each fleet."
- 12.4 The Qualifying Series points less discard are carried forward to the Final Series.



12.5 The Sailing Instructions will define the scoring system in full.

13. [NP][DP] SUPPORT VESSELS

13.1 All coach support vessels shall be registered with the Organising Authority and shall comply with local legislation and the 29er Class Support Vessel Regulations. Please see Attachment C. No vessels other than coach support vessels will be accepted.

13.2 Coaches support vessels shall register through the event website www.29ereuropeans.org on OurClubAdmin and pay the appropriate fee as per NOR 5.3.

13.3 All support vessels shall clearly display their national letters at all times while afloat. The minimum height of the letters shall be 200mm and visible from both sides of the boat.

13.4 If called upon support vessels shall act as rescue boats.

14. SAFETY

In the event of an emergency on the water, the meeting point for safety personnel and the dropping off point for safety boats coming from the racing area will be at the top of the main launching ramp. The Sailing Instructions will provide all details about the procedure and health services.

15. INTERNATIONAL JURY

An International Jury will be appointed in accordance with RRS 91(b). Its decisions will be final as provided in RRS 70.3(a).

16. ENVIRONMENTAL RESPONSIBILITY

The Basic Principles state: “Participants are encouraged to minimize any adverse environmental impact of the sport of sailing”. It is requested that care be taken to protect the environment during and after the event. Attention is drawn to RRS 47 - TRASH DISPOSAL which states “Competitors and support persons shall not intentionally put trash in the water. This rule applies at all times while afloat.

17. PRIZES

Prizes will be awarded in the following categories,

- a. Men’s Open European Champions 1st to 3rd
- b. Women’s Open European Champions 1st to 3rd
- c. Mixed Open European Champions 1st to 3rd
- d. Men’s European Champions 1st
- e. Women’s European Champions 1st
- f. Mixed European Champions 1st
- g. Overall 1st to 10th
- h. Under 17 Open European Champions 1st to 3rd Men, 1st to 3rd Women and 1st to 3rd Mixed (must be born in 2010 or later)
- i. Under 17 European Champions 1st Men, 1st Women and 1st Mixed
- j. Silver, Bronze, Emerald, Purple and White Fleets 1st to 3rd (assuming 6 fleets)
- k. Over 18 overall (helm and crew) 1st
- l. The Nations Cup shall be awarded to the nation with the best performance at the European Championships.

Other prizes may be awarded at the discretion of the Organising Authority.

18. RIGHTS TO USE NAMES & LIKENESSES



By entering the event consent for imagery has been given by a competitor. Competitors grant to the Organising Authority without payment the right in perpetuity to make, use and show any motion pictures, still pictures and live, taped or filmed television of or relating to the event. A drone may be flown by a licensed company to record video and still imagery primarily for the event advertising and promotion.

Only drones of the Organising Authority or with the approval of the organiser may be flown on the venue and the racing area.

19. RISK STATEMENT

RRS 3 of the Racing Rules of Sailing states: “The responsibility for a boat’s decision to participate in a race or to continue racing is hers alone.”

Sailing is by its nature an unpredictable sport and therefore inherently involves an element of risk. By taking part in the event, each competitor and their responsible adult agrees and acknowledges that:

- a) They are aware of the inherent element of risk involved in the sport and accept responsibility for the exposure of themselves, their crew and their boat to such inherent risk whilst taking part in the event.
- b) They are responsible for the safety of themselves, their crew, their boat and their property whether afloat or ashore.
- c) They accept responsibility for any injury, damage or loss to the extent caused by their own actions or omissions.
- d) Their boat is in good order, equipped to sail in the event and they are fit to participate.
- e) The provision of a race management team, patrol boats and other officials and volunteers by the event organiser does not relieve them of their own responsibilities.
- f) The provision of patrol boat cover is limited to such assistance, particularly in extreme weather conditions, as can be practically provided in the circumstances.
- g) It is their responsibility to familiarise themselves with any risks specific to this venue or this event drawn to their attention in any rules and information produced for the event and to attend any competitor briefing held for this event.

20. INSURANCE

Each participating boat shall be insured with valid third-party liability insurance with a minimum cover of Euros 1.5 million per event or the equivalent, **and, in the event of an incident with damage, agrees to exchange insurance policy information with the other boat.** Each support person vessel at the event shall be insured with a valid third-party liability insurance with a minimum cover of 350,000 Euro (or the equivalent) per incident and valid for the event.

21. FURTHER INFORMATION

For information on travel and accommodation, including lists of local hotels, holiday rentals, B&B's, campervans, caravans and camping please check the local event website www.29ereuropeans.org

22. CHARTER BOATS

For official charter information please see the link below

<https://www.29ereuropeans.org/logistics/29er-charter-boats/>

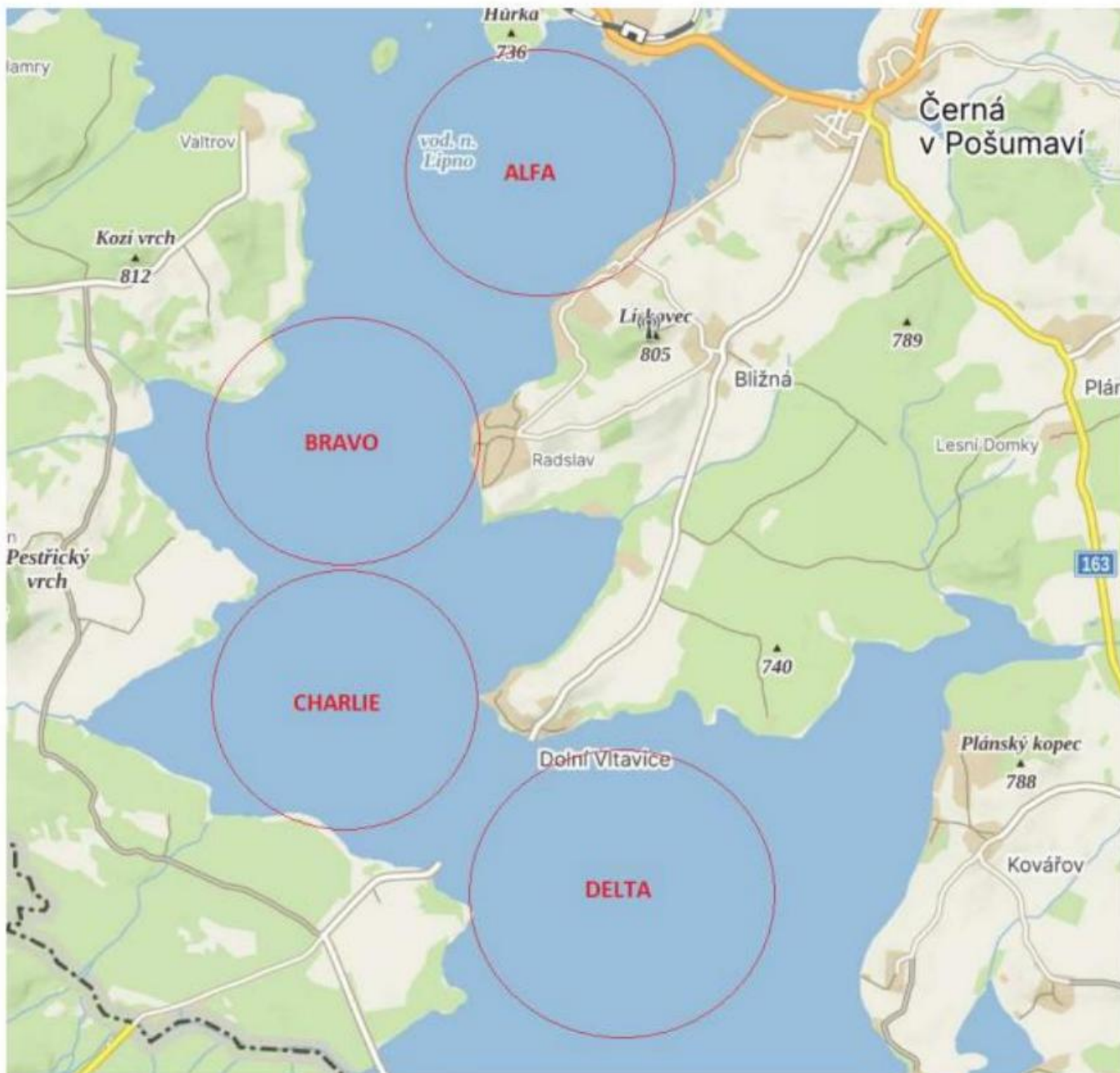
CHARTER RIBs

For official charter RIB information please see the official website.



Attachment A

Course Locations



Attachment B



Attachment C

Support Vessel Regulations *29er*

1. Support Vessels shall be registered with the Organising Authority and shall be marked with their applicable national sail letters clearly displayed, the minimum height for these letters is 200mm.
2. Support Vessels shall comply with all local regulations.
3. Support Vessels shall carry the following Equipment on board:
 - i. Life jackets / buoyance aids for the driver and all passengers,
 - ii. Engine kill cord (also known as a safety lanyard or automatic engine immobiliser) with a spare kill cord on the support boat
 - iii. VHF radio capable of receiving instruction from Safety or Race Committee
 - iv. First-aid kit
 - v. Device for making a sound signal
 - vi. Compass
 - vii. Adequate anchor and tackle for conditions and depth
 - viii. Tow rope (minimum 15m long and 10mm thick)
 - ix. Knife
4. Regulations when afloat
 - a. Kill cords shall be worn at all times when the engine is running.
 - b. Life jackets / buoyance aids - it is recommended that they are worn at all times when afloat and shall be worn in winds of over 10 knots or when motoring at more than 10 knots.
 - c. Support vessels shall not be positioned, except during rescue operations:
 - i. closer than 100 metres of any boat racing;
 - ii. within 100 metres of the starting line and its extensions from the warning signal until all boats have left the starting area;
 - iii. within 100 metres of any mark of the course while boats are in the vicinity of that mark;
 - iv. within 100 metres of the finishing line while boats are finishing.
 - d. In addition, support vessels that are motoring above 5 knots shall remain at least 150 metres from any boat racing.
5. Radio Communication
 - a. Support Vessels shall follow Race Committee instructions on the designated VHF channel.
 - b. When in the racing area, the Race Committee will inform Support Persons of its intentions on this channel, and between races Support Persons may request updates of the Race Committee's intentions.
 - c. During racing, Support Persons shall only broadcast safety-related communication on this channel.

David Campbell-James email: campbelljames@btinternet.com
January 2026

